



Homelessness in Kansas: Who is experiencing it? What causes it?

November 9, 2023
Kansas Special Committee on Homelessness

How many Kansans are experiencing homelessness?

ON 1 NIGHT IN 2022

2,397

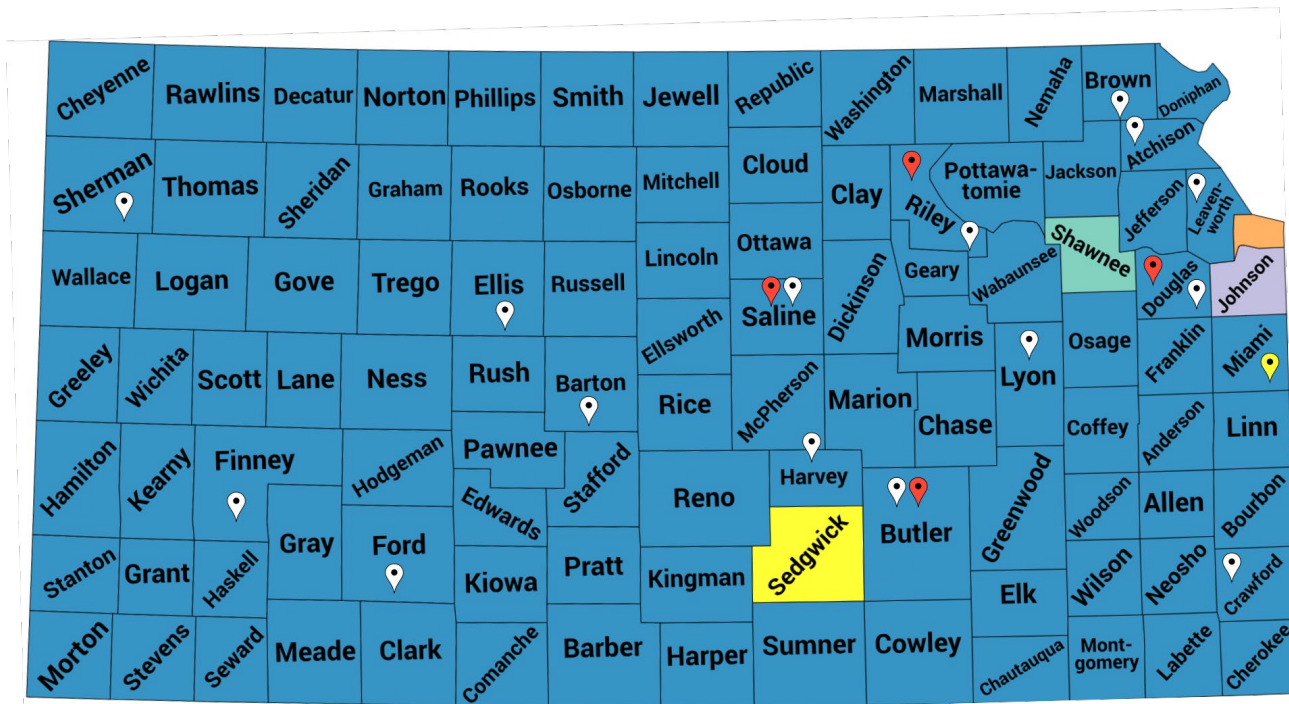
people in Kansas were experiencing homelessness






- This is a snapshot of a single night and does not include those who are doubled up with a friend or family member.
- In 2021-2022, Kansas school districts reported working with 7,129 students who were doubled up, living in shelters, unsheltered, or living in motels.
- For a nationwide snapshot of homelessness, see NAEH, [*State of Homelessness: 2023 Edition*](#).

Homelessness is solvable.

Kansas has a coordinated response to homelessness through Continuums of Care (COCs)



-  Emergency Shelter
-  Permanent Housing (Rapid Re-Housing or Permanent Supportive)
-  Transitional Housing

A CoC is:

- A geographic area
- A planning body
- A broad coalition of agencies, local government offices, and others
- A funding stream



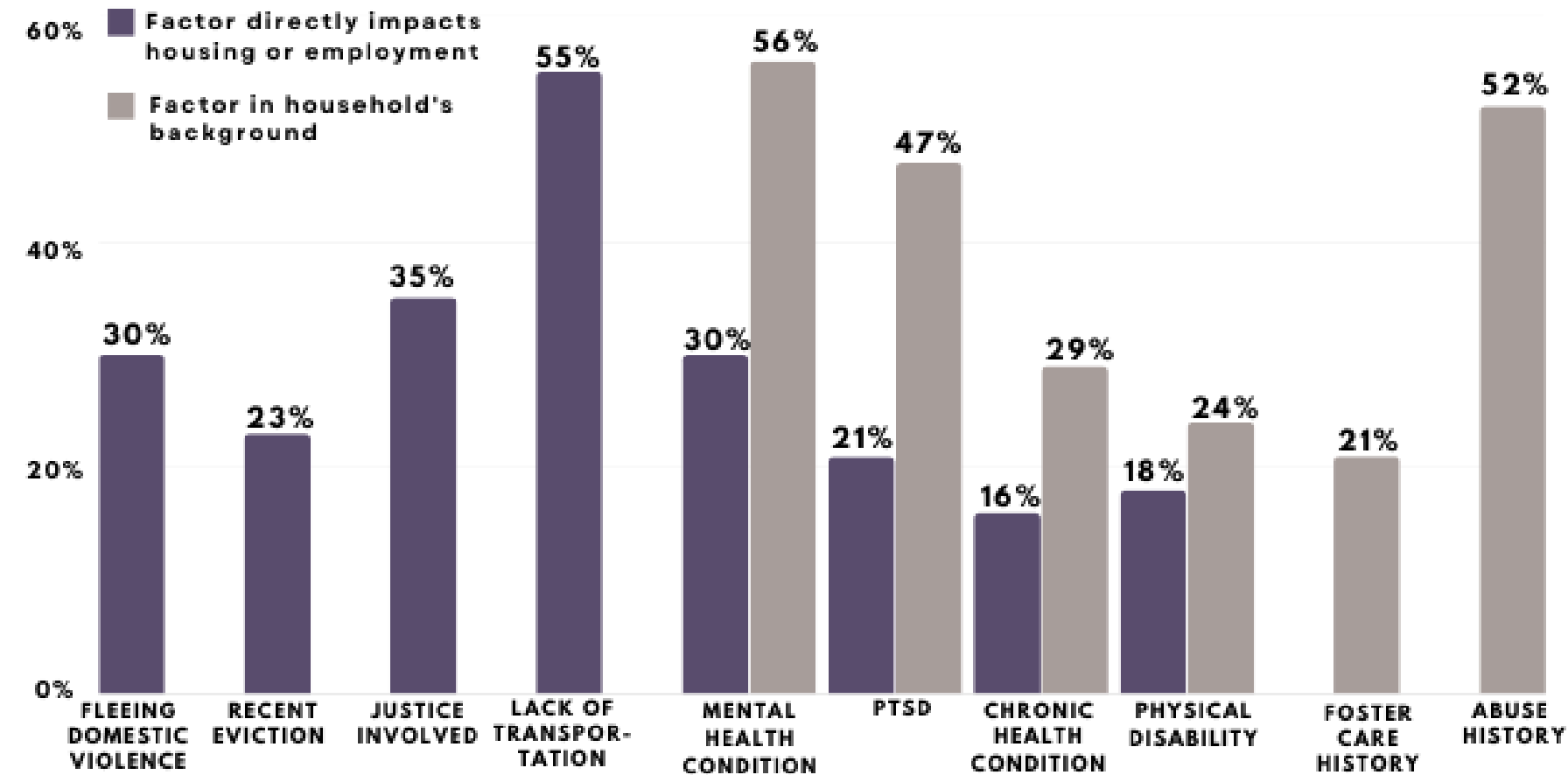
Gaps in housing supply create pressure: on workforce, retirees, and on vulnerable households -- pushing them out of housing.

Vulnerable Households in our Housing Continuum



Image Source: Johnson County Board of County Commissioners Housing Subcommittee

2023 Johnson County PIT Count: *What contributed to homelessness?*



EMPLOYMENT



39%

OF ADULTS COUNTED WERE CURRENTLY EMPLOYED

INCOME



55%

OF ADULTS COUNTED HAD INCOME (I.E. EMPLOYMENT AND/OR DISABILITY BENEFITS)

FIRST-TIME

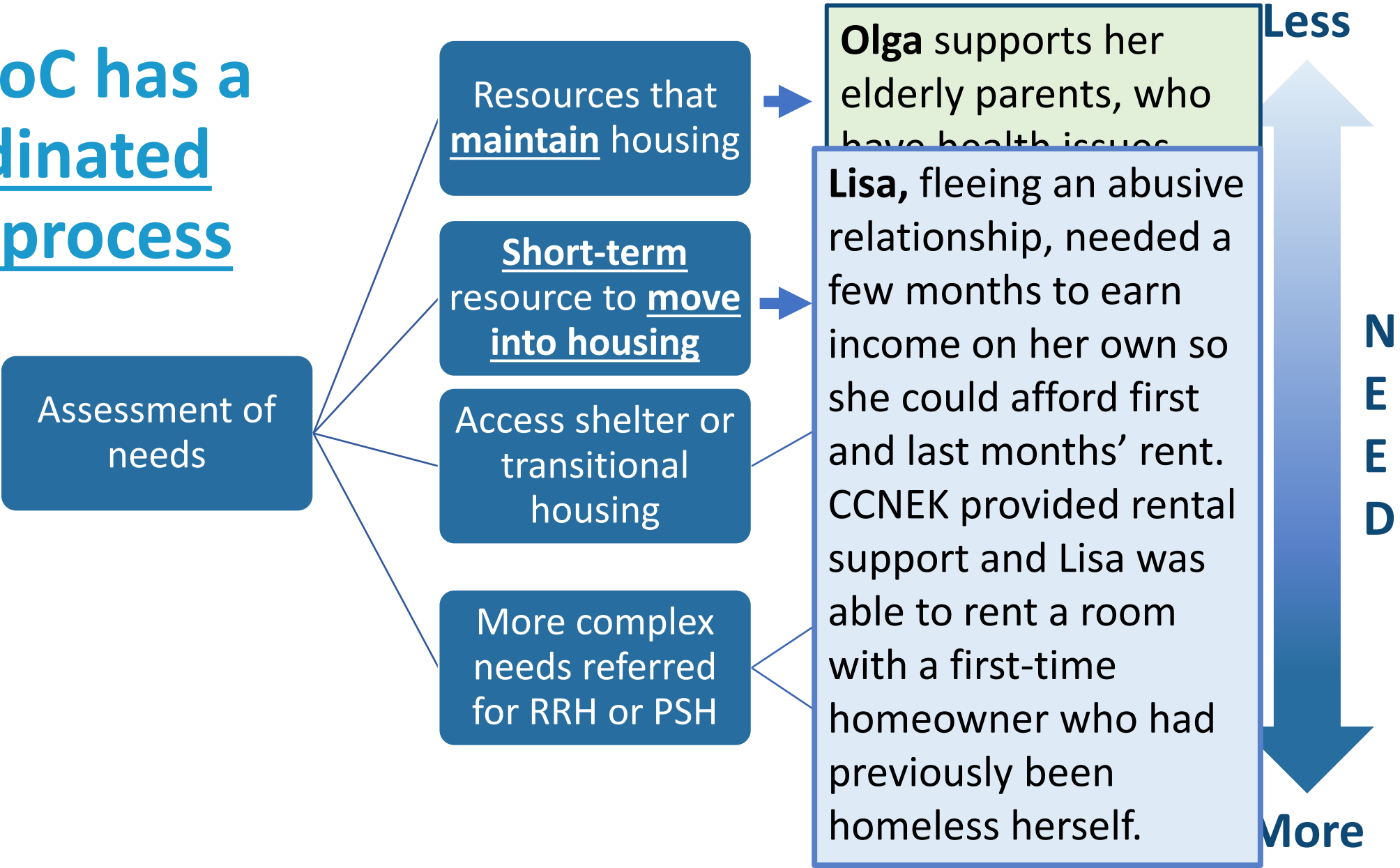


44%

OF HOUSEHOLDS WERE EXPERIENCING THEIR FIRST INCIDENT OF HOMELESSNESS



Each CoC has a coordinated entry process





Each CoC has a coordinated entry process

Assessment of needs

Resources that maintain housing

Short-term resource to move into housing

Access shelter or transitional housing

More complex needs referred for RRH or PSH

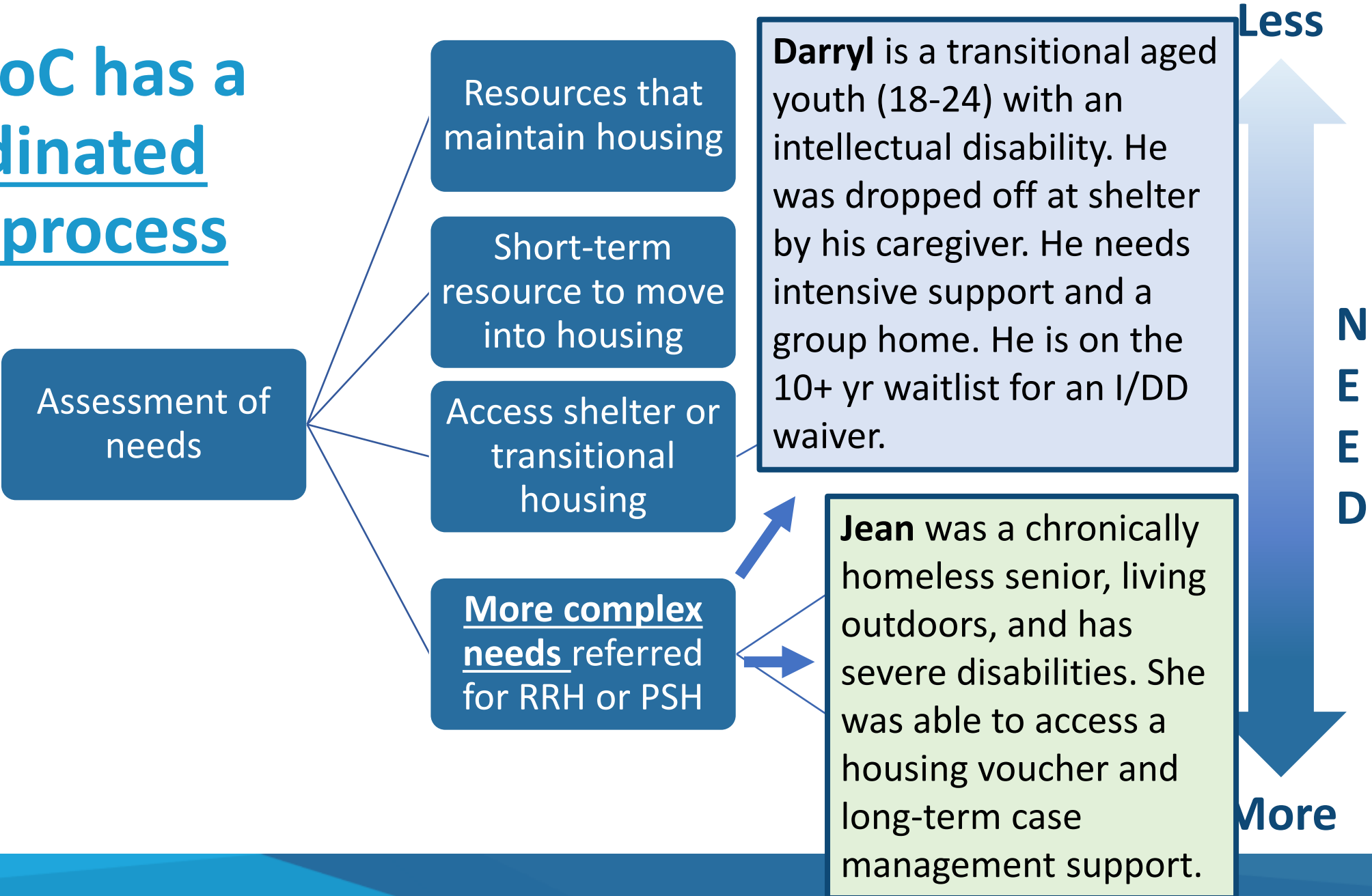
David, a veteran whose home burned down, lost everything, even his pets and personal documents. He needed shelter and case management support to get back into housing.

Gail, caregiver to 5 grandchildren, was evicted when she couldn't make ends meet. She and her family lived in shelter while saving and paying past-due bills. With support, they found a 3 bedroom apartment.





Each CoC has a coordinated entry process



Takeaways: What causes homelessness? Who is experiencing it?

- Our housing shortage pushes vulnerable Kansans out of housing, makes it impossible to house workforce, and leaves other Kansans in housing that doesn't fit their needs.
- Kansans are vulnerable to loss of housing due to high cost of housing, limited income, unexpected expenses and medical debt, physical or behavioral health needs, domestic violence, or a combination thereof.
- Kansas is seeing an increase in homelessness, especially unsheltered.
- Coordinated expanded investment in supports such as: behavioral, mental and physical health, I/DD waiver, food and childcare supports, and reduced property taxes will reduce vulnerability of Kansas households.
- Incentivizing building more workforce, affordable, and multi-unit housing will help Kansans get into housing that fits their needs and remain housed.



Thank You!

Submitted on behalf of United Community Services (UCS) with support from the Kansas Statewide Homelessness Coalition (KSHC) and its members.

Direct questions to:

**Christina Ashie Guidry,
Director of Policy & Planning
United Community Services of Johnson County (UCS)
christinag@ucsjoco.org**