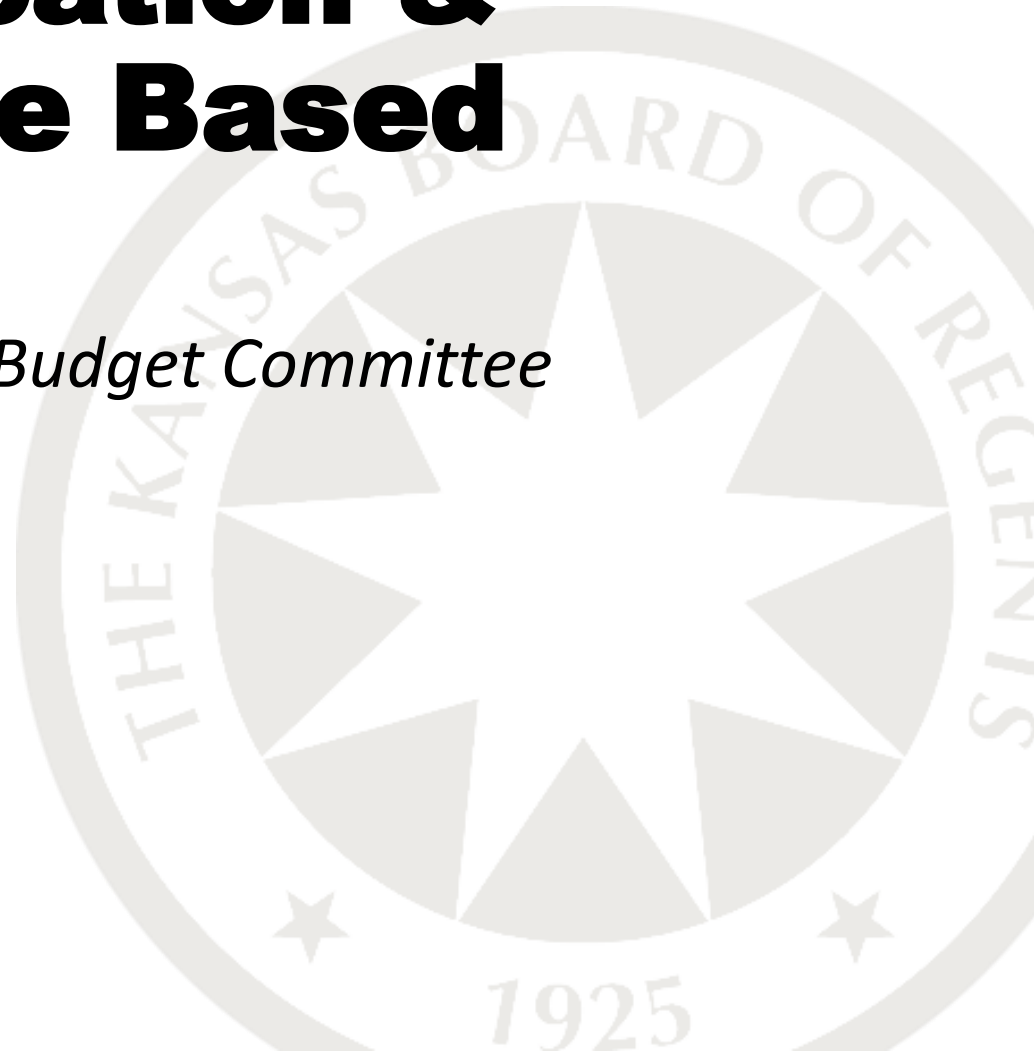


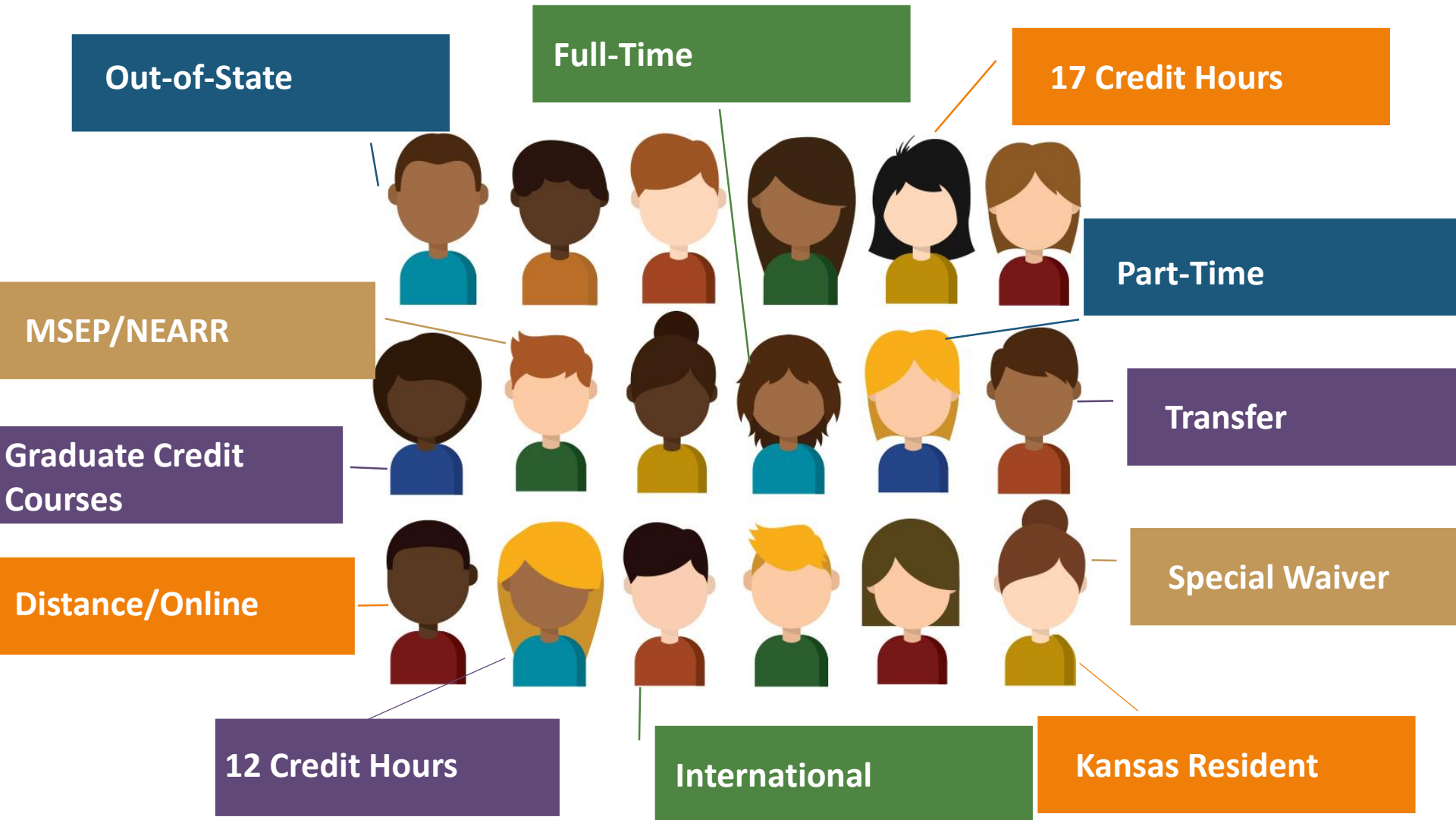
Higher Education & Performance Based Budgeting

House Higher Education Budget Committee

March 2018



Student Driven, Variable Revenue



Intertwined Expense Structure



Faculty teaching multiple courses spanning multiple departments and programs	<ul style="list-style-type: none">• Statistics course serving both Business and Psychology students• General Biology, Botany and Ecology
Core curriculum undergirding major program courses	<ul style="list-style-type: none">• General Biology• English• History
Academic support services	<ul style="list-style-type: none">• Libraries• Student Advising• Information Technology• Accessibility• Student Academic Support
Student support services	<ul style="list-style-type: none">• Student Wellness• Registration• Financial Aid• Student Activities
Institutional infrastructure	<ul style="list-style-type: none">• Facilities• Human Resources• Recruitment

Performance Agreements

Since 1999 (K.S.A. 74-3202d) all Kansas Regents institutions have established Kansas Board of Regents-approved performance agreements.



Additional Excellence Assurance Oversight & Accountability

National & Program-Specific Accreditations



Council for the
Accreditation of
Educator Preparation



Engineering
Technology
Accreditation
Commission



LIAISON COMMITTEE ON
MEDICAL EDUCATION



NASAD

NATIONAL
ASSOCIATION
OF SCHOOLS OF
ART & DESIGN



Accredited by the
American Psychological Association



Q & A