

HOUSE BILL 2398 – Innovative Legislation Creating Economic Growth for Kansas



TEFFI *State of Kansas
Technology Enabled
Fiduciary Financial Institutions*



CONTENTS

The following pages provide responses to these questions and more:

1. What will House Bill 2398 enact?
2. What is a TEFFI?
3. How does a TEFFI benefit Kansas?
4. What other states have legislation similar to HB2398?
5. How is technology used by a TEFFI and how will it be regulated?
6. What is the asset base of a TEFFI and what financial guardrails does HB2398 establish for a TEFFI?
7. Will TEFFIs compete with existing Kansas trust companies and banks?
8. How do TEFFIs benefit the Kansas trust banking industry?
9. Does Kansas come out-of-pocket any expenses and who does bear the economic risk of a TEFFI?
10. How will TEFFIs affect the reputational integrity of the Kansas trust banking industry?
11. How does the technology and portal work?
- A. Appendix: About the Beneficient Company Group



WHAT WILL HOUSE BILL 2398 ENACT?

HB 2398 is innovative legislation structured to generate private investment in Kansas by:

1 Authorizes the chartering and lines of business for Technology Enabled Fiduciary Financial Institutions within Kansas

2 Establishes operating guardrails for Kansas TEFFIs to provide custodial services and financing to customers from across the U.S. who are invested in professionally managed alternative assets

3 Consolidates existing statutory legislation governing #1 and #2 above from several states (e.g. Kansas, Delaware, South Dakota, Texas and Wyoming) into one cohesive legislation (HB 2398) to position Kansas as the preferred jurisdiction for TEFFIs to operate from Kansas

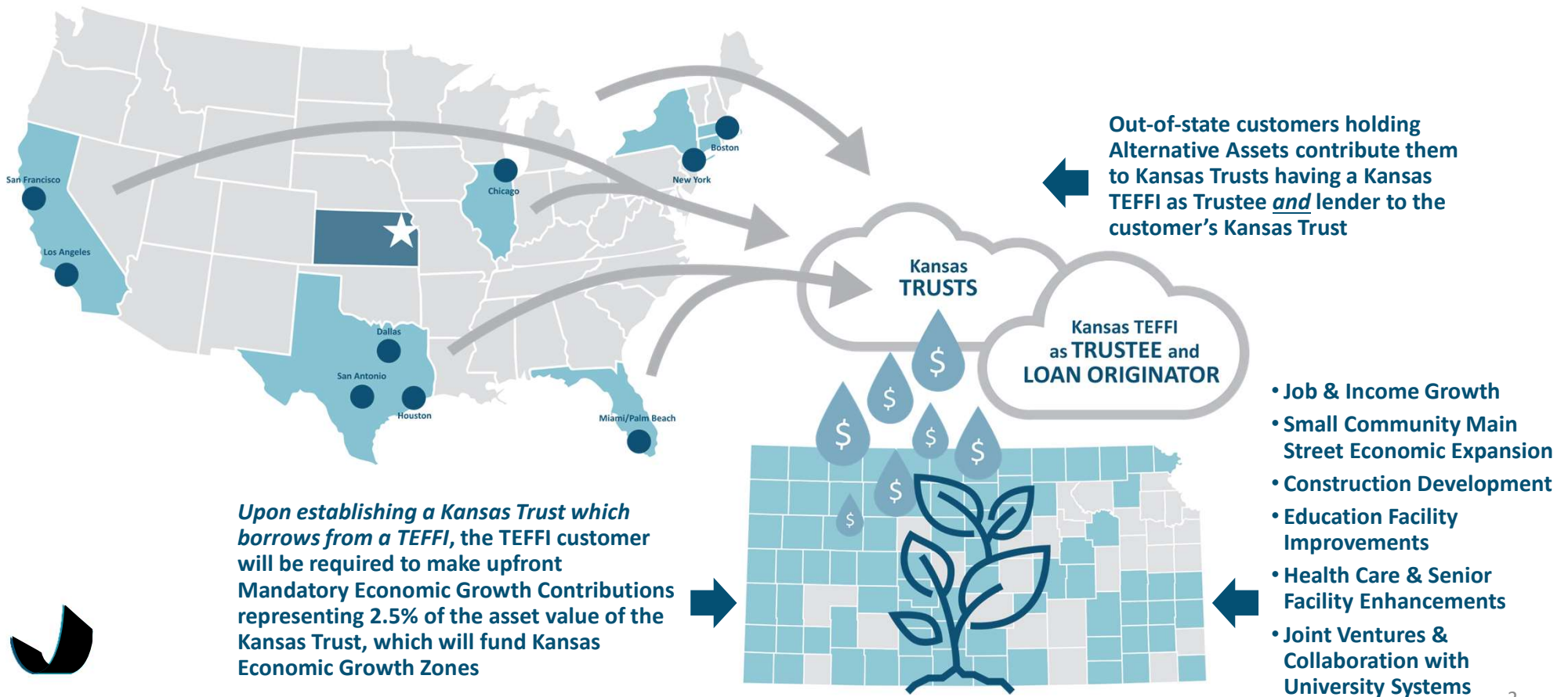
4 Imposes a 2.5% upfront one-time Customer tax (called the Economic Growth Contribution) on the value of the alternative assets contributed to Kansas Trusts having Kansas TEFFIs as Trustee and lender to the Kansas Trust, and provides a tax credit to the TEFFI as an incentive to operate in Kansas and bring Customers from across the U.S. to establish Kansas Trusts

5 Designates Kansas counties as Economic Growth Zones and funds them along with the Department of Commerce with the upfront one-time Customer tax collected by the TEFFI (the Economic Growth Contributions)



WHAT IS A TEFFI?

A TECHNOLOGY ENABLED FIDUCIARY FINANCIAL INSTITUTION WILL USE TECHNOLOGY TO BRING CUSTOMERS FROM ACROSS THE U.S. TO KANSAS

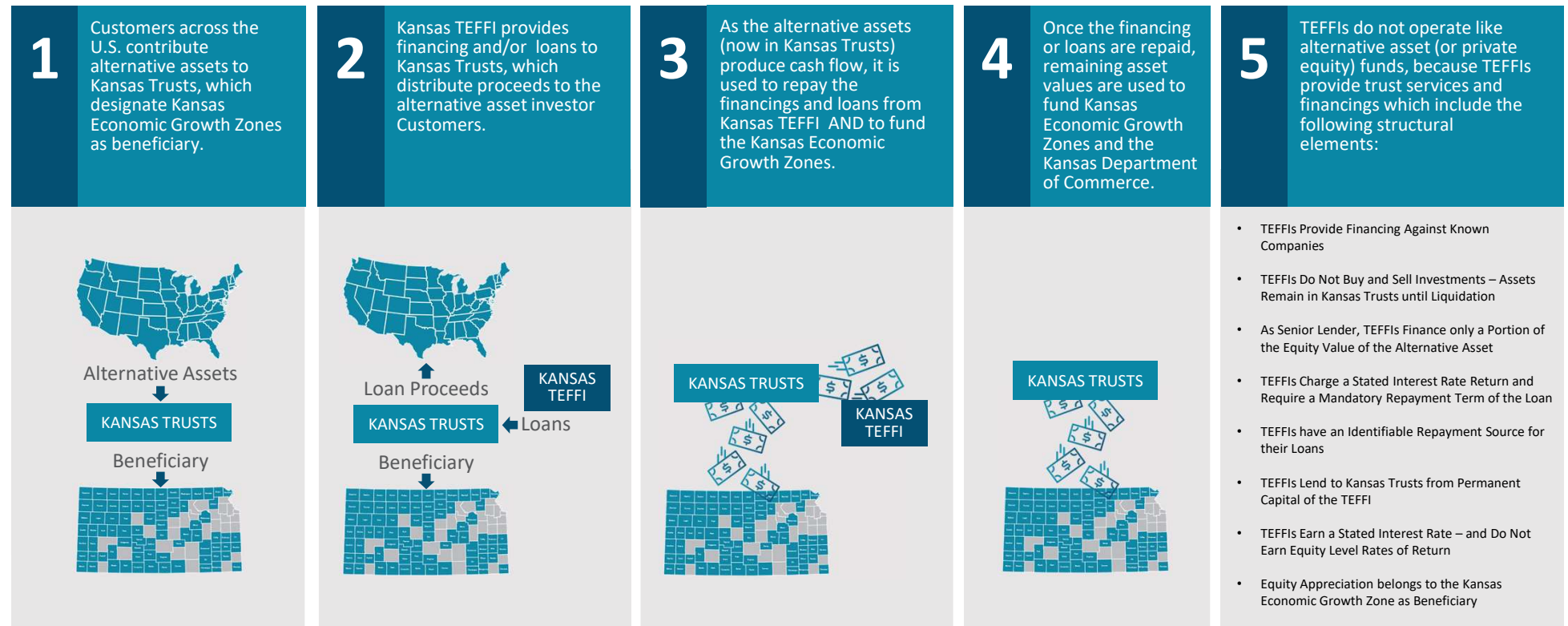


HOW DOES A TEFFI BENEFIT KANSAS?

KANSAS ECONOMIC GROWTH ZONES WILL RECEIVE FUNDING FROM TEFFIs PAID BY ALTERNATIVE ASSET INVESTORS FROM ACROSS THE U.S.

BENEFITS TO KANSAS Funds Will Flow to Economic Growth Zones in Kansas, and Kansas Will Have No Out-of-Pocket Expenses in This Process.

HOW THE PROCESS WORKS:



WHAT OTHER STATES HAVE EXISTING LEGISLATION SIMILAR TO HOUSE BILL 2398?

DELAWARE, SOUTH DAKOTA, TEXAS AND WYOMING EACH AUTHORIZE CERTAIN ASPECTS OF TEFFI OPERATIONS, BUT NO ONE STATE HAS COMPREHENSIVE STATUTES

House Bill 2398 consolidates the following existing statutory provisions from multiple states into one cohesive legislation positioning Kansas as the preferred jurisdiction for trust banks to consolidate operations from other states.

House Bill 2398 Reference	Statutory Source	Description
Consolidated Statutes from Existing Kansas Legislation		
Sec. 1(b)(6)	K.S.A. 74-50, 222	Identification of Economic Growth Zones
Sec. 2	K.S.A. 9-801	Charter Requirements
Sec. 3	K.S.A. 9-1703	Examination and Fees
Sec. 4	K.S.A. Article 9	General Incorporation of Article 9
Sec. 5	K.S.A. 9-901	Capital Requirements
Sec. 6	K.S.A. 9-1114	Management/Composition of Board of Directors
Sec. 7	K.S.A. 9-1704	Reporting Obligations to Commissioner
Sec. 10	K.S.A. 9-1101	Authorization of Trust Bank Powers
Sec. 12	K.S.A. 9-1104	Licensing and Outsourcing of products/services
Sec. 19	K.S.A. 58a-708	Trustee Compensation
Consolidated Statutes from Existing Delaware Legislation		
Sec. 1(b)(9)	12 Del. C. §3301(d)	Definition of “fiduciary”
Sec. 14	12 Del. C. §3313	Rights and Powers of Trust Advisor
Sec. 15	12 Del. C. §3313A	Duties and Liabilities of Trust Advisor
Sec. 26	25 Del. C. §503	Duration of FidFin Trust

House Bill 2398 Reference	Statutory Source	Description
Consolidated Statutes from Existing South Dakota Legislation		
Sec. 1(b)(7)	SDCL § 55-1B-1(5)	Definition of “excluded fiduciary”
Sec. 1(b)(13)	SDCL § 55-1B-1(3)	Definition of “trust advisor”
Sec. 9(c)	SDCL § 51A-6A-11.1	Principal Office Requirements
Sec. 15	SDCL § 55-1B	Duties and Liabilities of Trust Advisor
Sec. 15(d)	SDCL § 55-1B	Directives of Trust Advisor
Sec. 20	SDCL §21-22-28	Privacy of FidFin Trusts
Sec. 23	SDCL §54-3-1.1	Usury
Consolidated Statutes from Existing Texas Legislation		
Sec. 12	TX Trust Code §113.108	Authority to Engage Agents/Employees
Sec. 18	TX Trust Code § 114.007	Limitations of Indemnification
Consolidated Statutes from Existing Wyoming Legislation		
Sec. 8	Wyo. Stat. §34-29-104(p)	Definition of “custodial services”
Sec. 1(b)(5)	Wyo. Stat. §13-1-204	Use of “bank” in name
Sec. 13	Wyo. Stat. § 34-29-104	Requirements for custodial services
Sec. 16	Wyo. Stat. § 4-10-713 & 714	Trust Advisor as a fiduciary and subject to KS jurisdiction

HOW IS TECHNOLOGY USED BY A TEFFI AND HOW WILL IT BE REGULATED?

PURSUANT TO HOUSE BILL 2398, TEFFIS WILL COMPLY WITH ALL RELEVANT BANKING LAWS UNDER THE SUPERVISION OF THE BANKING COMMISSIONER

Technology differentiates a TEFFI:

- 1 Allows a TEFFI to efficiently and securely process transactions over a web-based portal
- 2 Provides national scope, since access is online rather than in person
- 3 Facilitates “remote transactions,” making a high volume, secure transactional process possible, while still complying with all banking rules



Comparison



High volume, transactional	Relationship-oriented
Customer comes to the portal, transacts, and departs	Longer term connection with Customers
National reach	More defined geographic scope
Fiduciary capacity	Fiduciary capacity



WILL TEFFIs COMPETE WITH EXISTING KANSAS TRUST COMPANIES & BANKS?

TEFFIs are different both because of what they do and, just as important, what they don't do – they do not provide traditional trust banking services in Kansas.

1 Do not provide traditional administration services such as ILITs, Revocable Trusts, Gifting Trusts, GRATS and Estate Administration

2 Focus on investors worth over \$5 million from major wealth city centers outside of Kansas and not in the major Kansas markets

3 Do not take cash deposits, provide traditional banking services or offer investment products

4 Transactional focus through technology enablement - not relationship oriented through personal contact

5 Provide Fiduciary Finance (FidFin) loans collateralized by Alternative Assets (Covered Funds), whereas Federal regulation restricts deposit-taking trust banks from making such loans

6 TEFFIs are not focused on the investment advisory services business. TEFFIs are focused on transactions, not relationships



HOW DO TEFFIs BENEFIT THE KANSAS TRUST BANKING INDUSTRY?

TEFFIs ARE COMPLEMENTARY TO EXISTING KANSAS TRUST COMPANIES AND BANKS

TEFFIs will serve to position Kansas among the leaders in U.S. financial trust services, while providing practical benefits to both Kansas bankers and the citizens of Kansas.

The technology enablement of a TEFFI facilitates the origination of assets from residents of wealth city-centers across the U.S. thereby generating funds for the State of Kansas through the Privilege Tax or Economic Growth Contribution, whichever is greater.

The Economic Growth Contributions will fund and fuel economic growth, job growth, construction and main street redevelopment with local banks within Economic Growth Zones.

The cash accounts of the Kansas trusts administered by TEFFIs will be deposited in local banks.

Kansas banks and trust companies will be able to offer their Customers highly specialized custody and liquidity services for complex alternative assets by utilizing TEFFIs as sub-custodians.

TEFFI legislation will further highlight and promote Kansas and the KBA as leaders in the financial services industry.



WHO BEARS THE ECONOMIC RISK OF A TEFFI?



1. NOT KANSAS – The TEFFI and all compliance are privately funded by the TEFFI in advance. Kansas has NO out-of-pocket expenses.



2. NOT BENEFICIARIES – NO capital invested.



3. NOT DEPOSITORS – The TEFFI is a non-depository trust company.



4. COMMON SHAREHOLDERS – Risk factors are fully disclosed and a primary focus of the TEFFI Board of Directors.

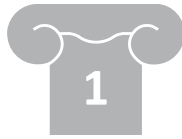


HOW WILL TEFFIs AFFECT THE REPUTATIONAL INTEGRITY OF THE KANSAS TRUST BANKING INDUSTRY?

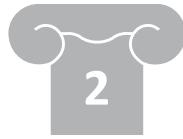
MARKETPLACE CONFIDENCE IN TECHNOLOGY-ENABLED TRANSACTIONS IS PARAMOUNT



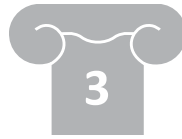
Three key pillars supporting reputational integrity.



TEFFI FOCUS
on preserving the reputational integrity of the KBA, Kansas Trust Companies & Banks



TEFFI POLICIES
ensuring reputational integrity



TEFFI LEADERSHIP
of the highest caliber, with unimpeachable credibility and integrity

POLICIES

Examples of Ben's Policies containing procedures covering reputational integrity include:

Enterprise Risk Management Policy
BSA/AML/OFAC Policy
Fair Lending Policy
Fair Credit Reporting Act Policy
BEN Business Code of Conduct
BEN Employee Handbook
BUSINESS Continuity Policy
Concentrations of Credit Policy
Credit Risk Policy
Credit Scoring Policy

Allowance for Loan Losses
IT Vendor Management Policy
Loan Review Policy
Model Risk Management Policy
Problem Loan Policy
Related Party Transactions Policy
Risk Management Policy
Travel and Expense Policy
Fiduciary Account Management Policy

TEFFIs such as Ben are committed to contributing to the reputational integrity of the **trust and banking industry** as reflected within the policies and procedures approved by Ben's Board of Directors and governed by the Board's Enterprise Risk Committee and Compensation Committee.

Ben's 9-member Board of Directors includes former Federal Reserve Presidents and current industry leaders with national reputations, such as:



Richard Fisher,
Senior Partner Director
Prior: President and Chief Executive Officer of the Federal Reserve Bank of Dallas



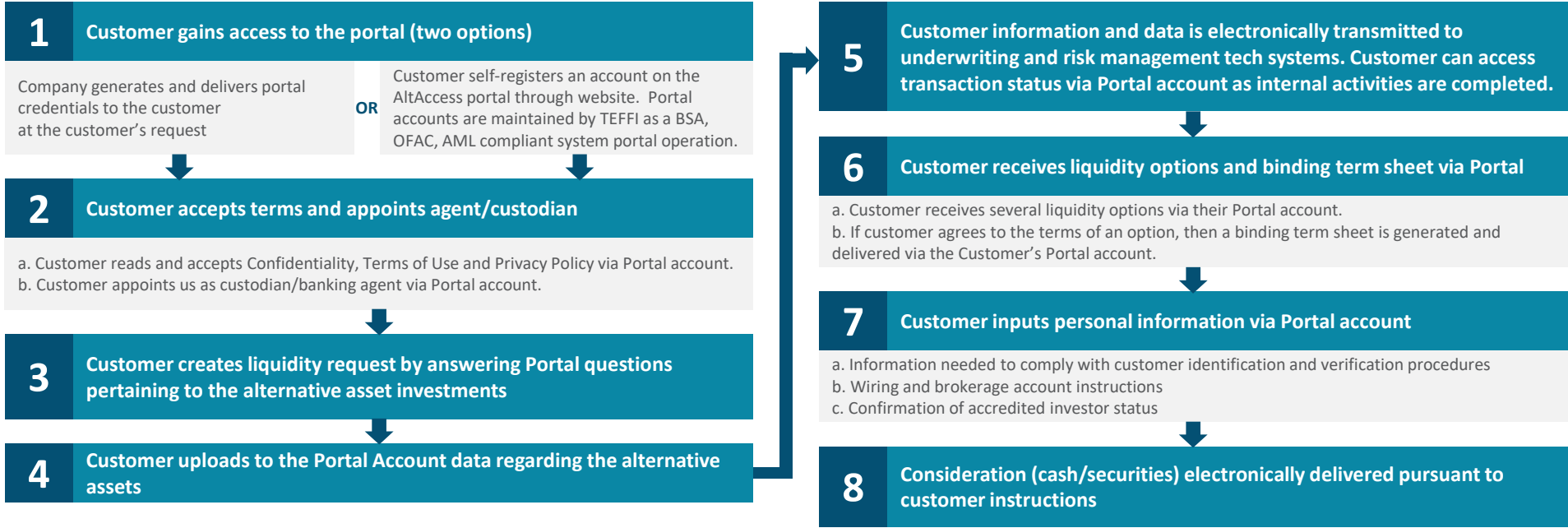
Dennis P. Lockhart,
Independent Director
Prior: President and Chief Executive Officer of the Federal Reserve Bank of Atlanta



HOW DOES THE TECHNOLOGY AND PORTAL WORK?



Customer Portal Account Setup, Submission of Customer Alternative Assets and Delivery of Liquidity Proposals



Customer portal incorporates detailed internal controls procedures, segregation of duties, reviews and approvals at various stages of the transaction. Reviews, approvals and final officer signoff are documented via verified electronic signatures.

APPENDIX: ABOUT THE BENEFICIENT COMPANY GROUP

Since its founding in 2003 and commencement of commercial operations in 2017, Beneficient has been dedicated to a simple goal: **to create opportunity** for individuals and institutions that own alternative assets, and through our rapid, simple, cost effective approach to level the playing field in alternative assets by providing individual investors the trust liquidity products and trust services previously available to only the largest institutional investors.



OPPORTUNITY

Beneficient provides private trust solutions, including a unique suite of private trust, lending and financing products, to bring liquidity to owners of alternative assets. Ben's trust liquidity solutions are designed **to serve** high net worth individuals, institutions with less than \$1 billion in investable assets, and asset managers who have historically possessed few attractive options to access early liquidity from their alternative assets.



SERVICE

Ben acts as principal and deploys its own balance sheet to help remove many of the traditional barriers to liquidity faced by alternative asset investors. We are grounded with a **strong leadership** team and a Board of Directors with extensive experience in alternative assets and financial services. Our robust risk management guidelines anchor and drive our origination and underwriting strategies, and our established extensive data security measures are designed to always safeguard information and transactions.



LEADERSHIP



Ben's operating philosophy is anchored in robust risk management

